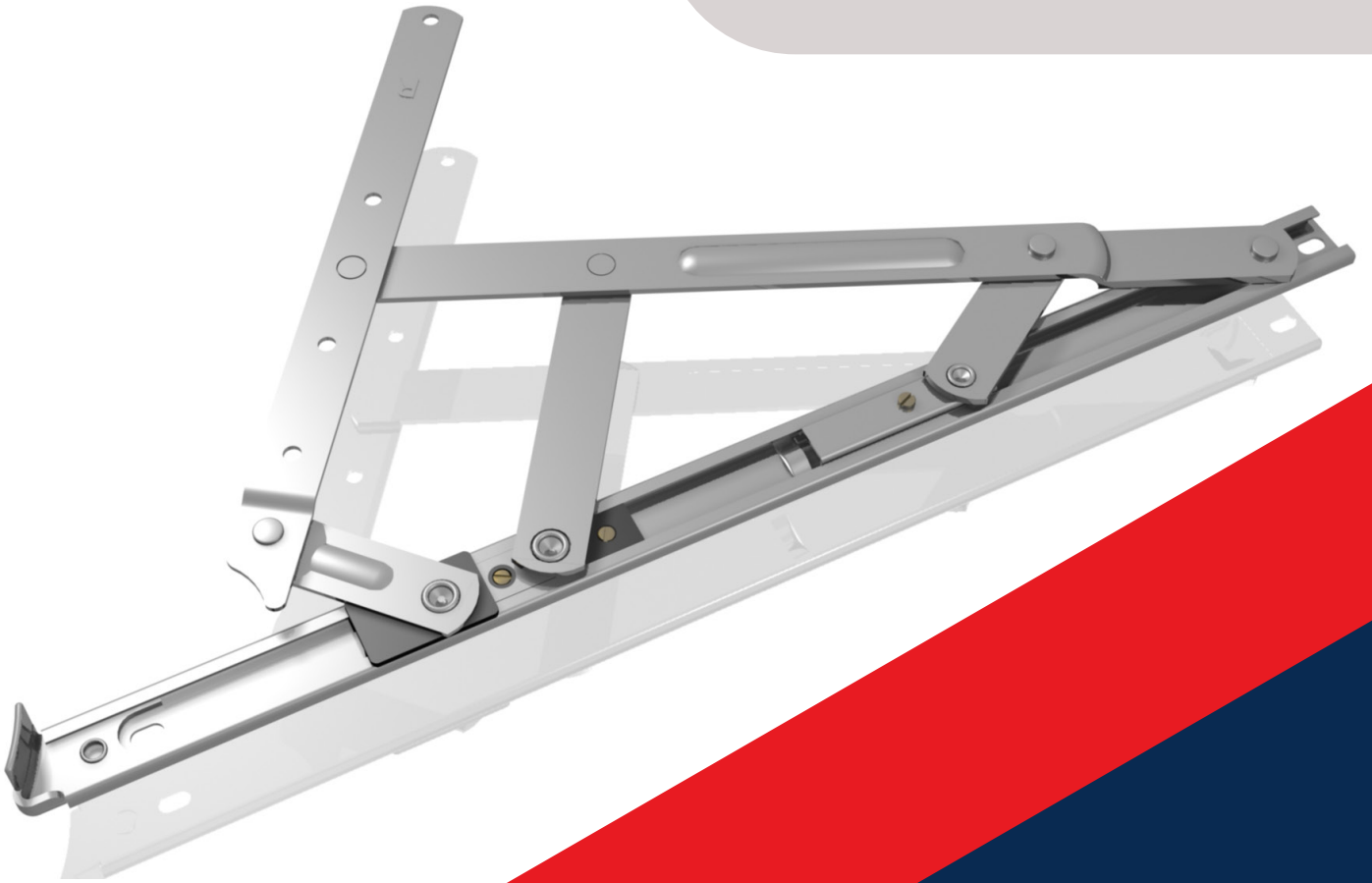


DATASHEET



**Cotswold**  
Architectural Products



# Fortis HDA Heavy Duty Friction Stays

for commercial applications

# Fortis HDA Heavy Duty Friction Stays

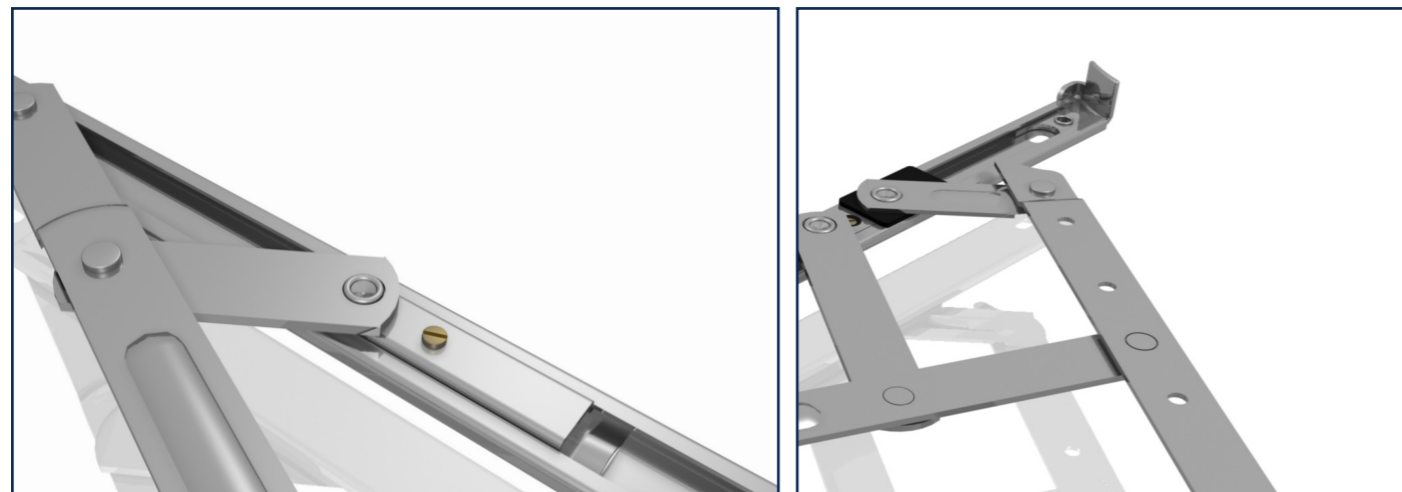
Heavy Duty friction stay for enhanced performance with timber, PVC-U and a large selection of aluminium profiles.

- Can be used on top hung vents up to 1800mm High and 115kg in weight.
- Stay arms and end cap made with 2.5mm thick Austenitic Steel for added strength.
- Friction stay stack height 16-17mm.
- Additional linkage and dual composite steel/plastic slider for strength, durability and smooth operation.
- The HDA16 & 18 Side Hung stays conform to BS8213, Minimum 95mm gap, for window cleaning (profile dependent).
- Manufactured from high grade Austenitic Stainless Steel for enhanced corrosion resistance. Even in the most corrosive environments.
- Conforms to all leading international window performance standards in the UK (BS6375 Part 2 1987), North America (AAMA 904.1), France (NFP-20-302) and Singapore (SS 212 1998).

On any windows over 32Kg we recommend that you fit additional Heavy Duty Friction Arms HD102, or TEL series, TELK support arms.

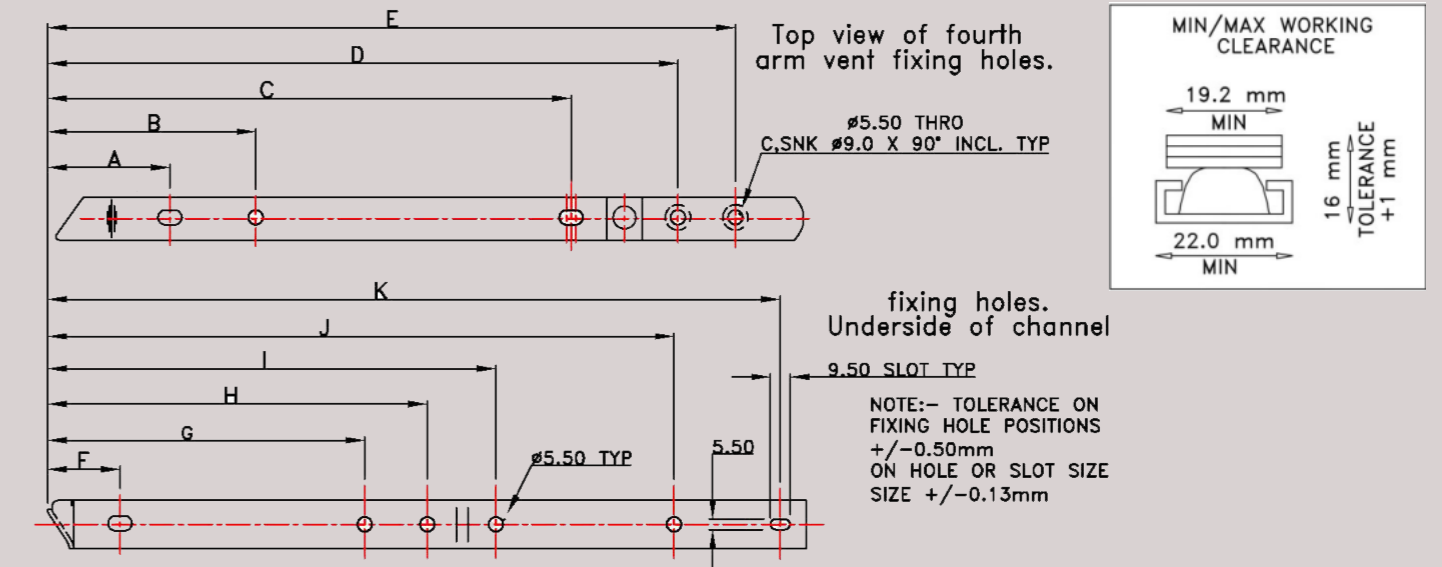
## Recommended Maximum Window Weights and Rebate Sizes

Product	Application	Size (Ins)	Size (mm)	Max. Vent Width (mm)	Max. Vent Height (mm)	Max. Vent Weight (kg)	Stack Height (mm)	Max. Opening Angle
HDA-16-2.5mm	Side hung	16.9	400	750	-	42	16/17	88°
HDA-18-2.5mm	Side hung	18.3	466	800	-	40	16/17	88°
HDA-16-2.5mm	Top hung	16.9	400	-	1100	72	16/17	27.5°
HDA-18-2.5mm	Top hung	18.3	466	-	1200	87	16/17	27.5°
HDA-24T90-2.5mm	Top hung	24	610	-	1800	115	16/17	20°



## Fixing Hole Details

Product	Application	A	B	C	D	E	F	G	H	I	J	K
HDA-16-2.5mm	SIDE HUNG	50.3	92.3	132.5	-	214.3	36.0	-	-	342.0	392.	-
HDA-18-2.5mm	SIDE HUNG	50.2	97.5	137.7	-	225.0	35.5	254.5	-	394.0	454.0	-
HDA-16-2.5mm	TOP HUNG	49.5	76.7	185.0	234.0	257.0	35.5	204.5	225.0	243.6	360.5	403.5
HDA-18-2.5mm	TOP HUNG	49.5	76.7	215.5	264.5	287.5	35.5	213.0	238.0	259.4	405.5	448.5
HDA-24T90-2.5mm	TOP HUNG	50.4	99.9	307.7	347.8	389.3	36.0	246.4	405.8	545.2	601.5	-



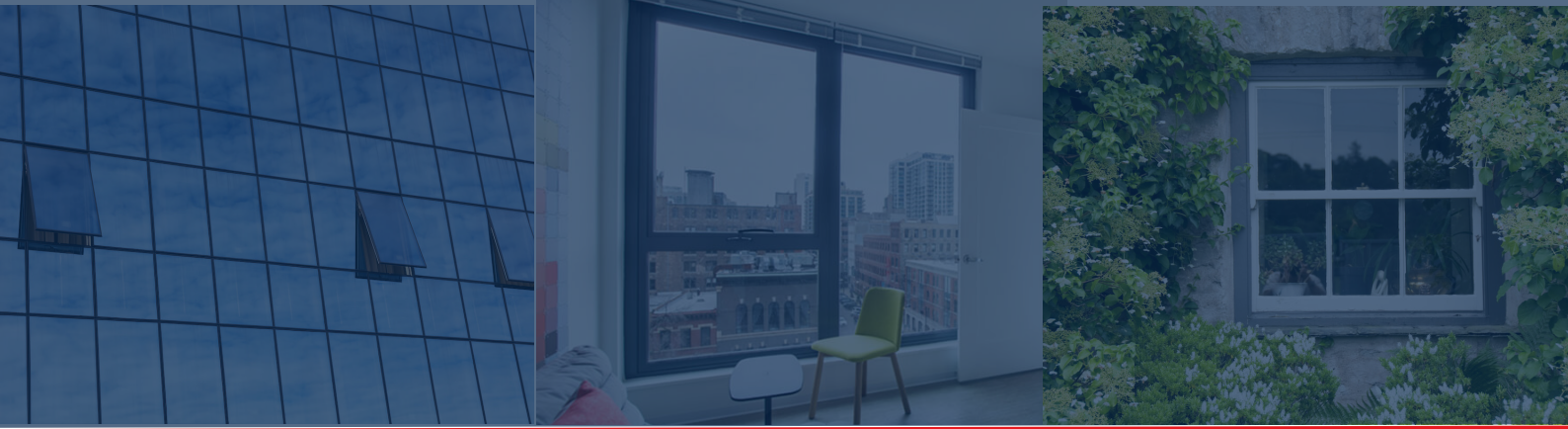
## Optimum Performance Tested to last

- BBA certified.
- Cycle tested to 25,000 cycles with no loss of function in accordance with BSEN 1191:2012 and exceeding class 3.
- Manufactured from high grade Austenitic Stainless Steel for enhanced corrosion resistance. Tested to Grade 5 (480 hours) exposure in accordance with BS EN 1670:2007.
- Conforms to all leading international window performance standards in the UK (BS6375 Part 2 1987), North America (AAMA 904.1), France (NFP-20-302) and Singapore (SS 212 1998).

Note: For larger or heavier sashes, all sash fixings should pick up reinforcement to ensure consistent performance.



It is the responsibility of the window manufacturer to ensure that the finished window meets the required safety and performance specifications.



[www.cotswoldap.com](http://www.cotswoldap.com)

**At Cotswold Architectural Products, every component is engineered for precision, durability, and strength. Trusted by professionals worldwide, we deliver performance you can rely on.**

Every effort has been made to ensure the information in this datasheet is accurate at the time of publication. Cotswold Architectural Products Ltd reserves the right to make changes without prior notice.

Copyright 2025,  
Cotswold Architectural Products Ltd



**Cotswold Architectural Products Ltd**

Manor Road  
Cheltenham  
Gloucestershire  
GL51 9SQ

Tel: +44 1242 233993  
Email: [info@cotswoldap.com](mailto:info@cotswoldap.com)

