

DATASHEET



**Cotswold**  
Architectural Products



# Heavy Duty Friction Stays

HD10R & HD16R

# HD10R & HD16R Heavy Duty Friction Stays

Heavy Duty friction stay for enhanced performance with timber, PVC-U and a large selection of aluminium profiles.

- Dual top hung and side hung use – reducing stock requirement
- Multiple stop positions allow fixing through a sliding metal plate at varying angles to permit use on larger, wider or heavier windows with the same hinge.
- Stay arms and end cap made with 2.5mm thick Austenitic Steel for added strength.
- Composite steel/plastic slider for strength, durability and smooth operation.
- Friction stay stack height 16–17mm.
- Manufactured from high grade Austenitic Stainless Steel for enhanced corrosion resistance. Even in the most corrosive environments.
- Conforms to all leading international window performance standards in the UK (BS6375 Part 2 1987), North America (AAMA 904.1), France (NFP-20-302) and Singapore (SS 212 1998).

On any windows over 32Kg we recommend that you fit additional Heavy Duty Friction Arms HD102, or TEL series, TELK support arms.

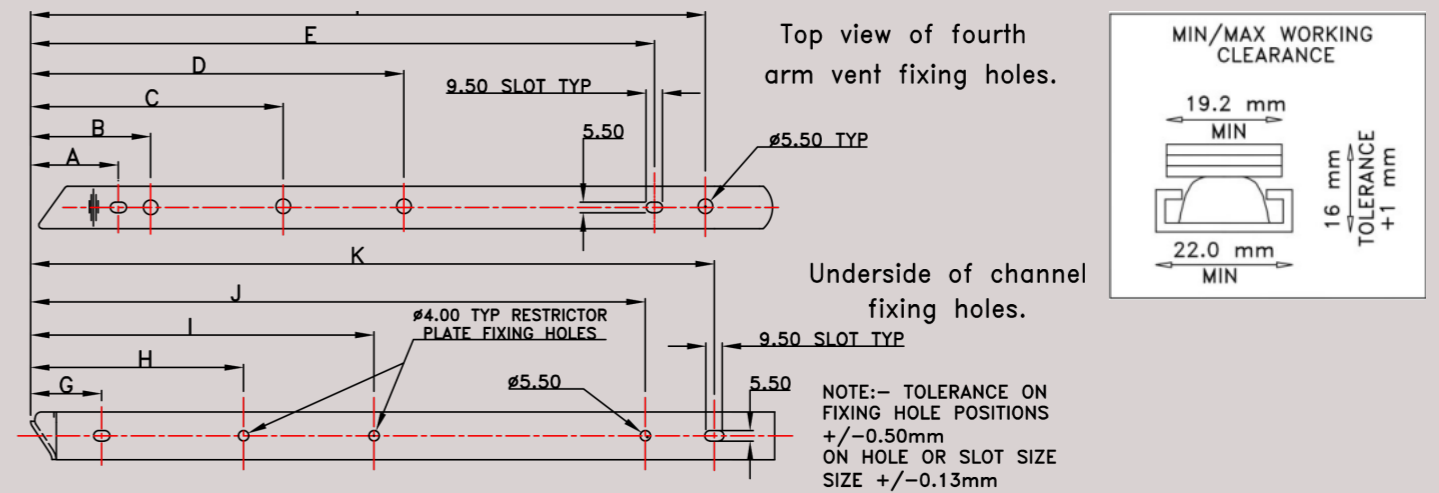
## Recommended Maximum Window Weights and Rebate Sizes

Product	Application	Size (Ins)	Size (mm)	Max. Vent Width (mm)	Max. Vent Height (mm)	Max. Vent Weight (kg)	Stack Height (mm)	Max. Opening Angle
HD10R	Top Hung	10.3	262	2000	650	50kg @ 50° 40kg @ 84°	16/17	50° & 84°
HD16R	Top Hung	16.3	415	2000	800	100kg @ 30° 55kg @ 50° 50kg @ 90°	16/17	30°, 50° or 90°
HD10R	Side Hung	10.3	262	660	1524	34.5kg	16/17	50° & 84°
HD16R	Side Hung	16.3	415	762	1619	42kg	16/17	30°, 50° or 90°
HD16R	Side Hung	16.3	415	700	1600	60kg @ 30° & 50° 42kg @ 90°	16/17	30°, 50° or 90°



## Fixing Hole Details

Product	Application	A	B	C	D	E	F	G	H	I	J	K
HD10R	TOP/SIDE HUNG	34.5	48.5	-	188.5	212.5	-	36.0	-	168.6	214.0	254.5
HD16R	TOP/SIDE HUNG	34.5	48.5	99.5	-	275.6	288.3	36.4	180.0	229.0	340.7	407.4



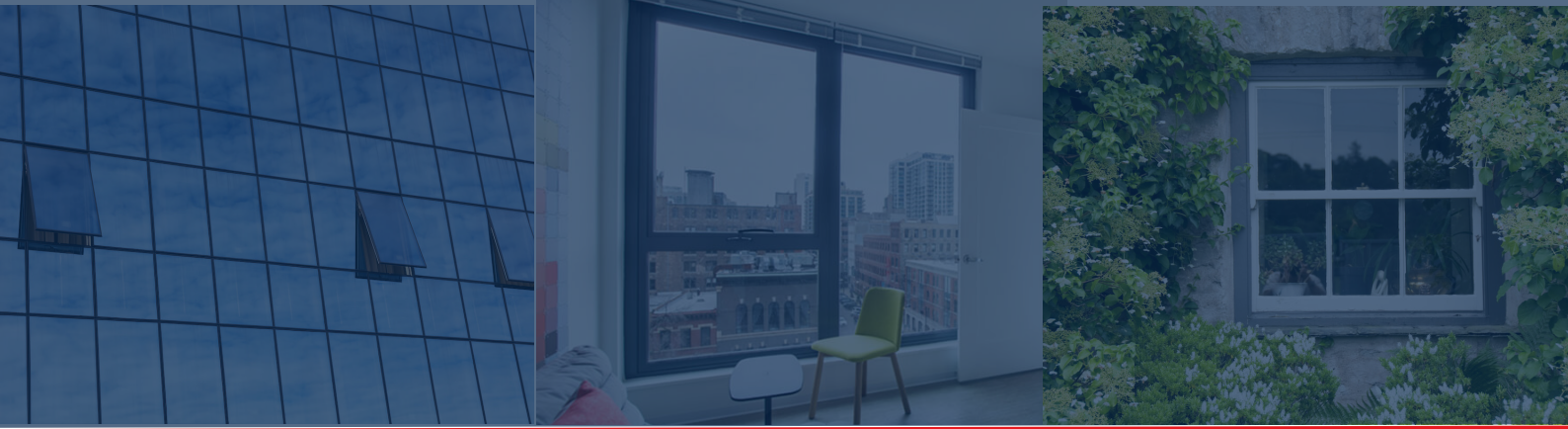
## Optimum Performance Tested to last

- BBA certified.
- Cycle tested to 50,000 cycles with no loss of function in accordance with BSEN 1191:2012 and exceeding class 4.
- Manufactured from high grade Austenitic Stainless Steel for enhanced corrosion resistance. Tested to Grade 5 (480 hours) exposure in accordance with BS EN 1670:2007.
- Conforms to all leading international window performance standards in the UK (BS6375 Part 2 1987), North America (AAMA 904.1), France (NFP-20-302) and Singapore (SS 212 1998).

Note: For larger or heavier sashes, all sash fixings should pick up reinforcement to ensure consistent performance.



It is the responsibility of the window manufacturer to ensure that the finished window meets the required safety and performance specifications.



[www.cotswoldap.com](http://www.cotswoldap.com)

**At Cotswold Architectural Products, every component is engineered for precision, durability, and strength. Trusted by professionals worldwide, we deliver performance you can rely on.**

Every effort has been made to ensure the information in this datasheet is accurate at the time of publication. Cotswold Architectural Products Ltd reserves the right to make changes without prior notice.

Copyright 2025,  
Cotswold Architectural Products Ltd



GLASS AND GLAZING FEDERATION



**Cotswold Architectural Products Ltd**

Manor Road  
Cheltenham  
Gloucestershire  
GL51 9SQ

Tel: +44 1242 233993  
Email: [info@cotswoldap.com](mailto:info@cotswoldap.com)

