

DATASHEET



Cotswold
Architectural Products



Egress Only
Friction Stays

Egress Only Friction Stays

Side hung friction stays, which allow a clear unobstructed openable area to comply with emergency egress requirements of Approved Document B of the Building Regulations.

- Complies with building regulations Approved Doc B1 (fire safety) for means of escape.
- Cycle tested with normal operation after 25,000 cycles in accordance with BSEN 1191:2012 (Exceeded class 3).
- Initial opening to 85° providing a clear opening in excess of 450mm on a 600mm wide vent.
- When fitting the SP254, SP300 and SP400 please observe BS8213 Part1:2004 Code of practice for safety in use and during cleaning of windows.
- Available in Ferritic steel and Austenitic steel for high corrosion resistance. Tested to Grade 5 – 480 hours exposure in accordance with BS EN 1670:2007.

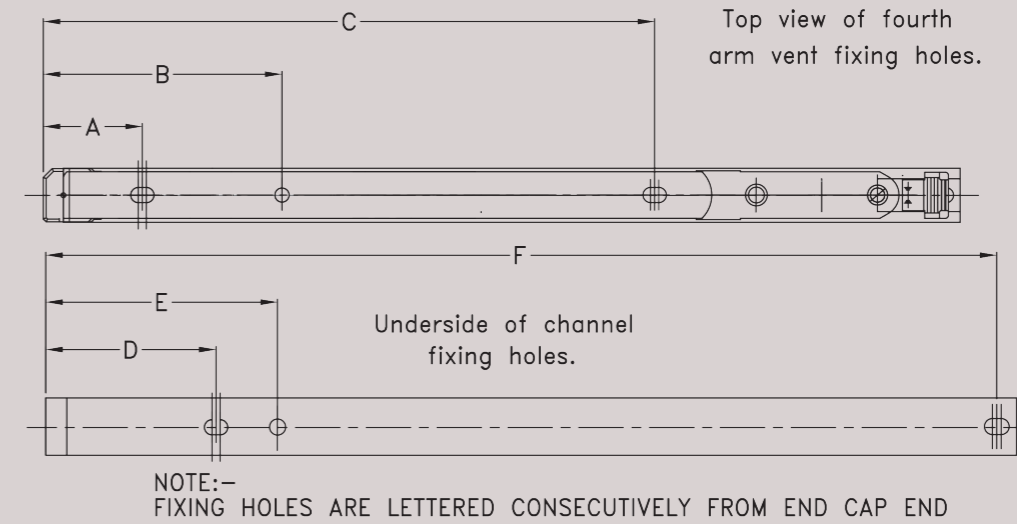
Recommended Maximum Window Weights and Rebate Sizes

Product	Application	Size (Ins)	Size (mm)	Max Vent Width (mm)	Max. Vent Height (mm)	Max. Vent Weight (kg)	Stack Height (mm)	Max. Opening Angle
SP254	Side Hung	10	254	600	1200	21	13/14 & 16/17	80°
SP300	Side Hung	12	311	600	1200	22	13/14 & 16/17	85°
SP400	Side Hung	16	406	700	1200	24	13/14 & 16/17	85°



Fixing Hole Details

Product	Application	A	B	C	D	E	F
SP254	SIDE HUNG	34.7	62.1	192.4	31.0	100.5	254.8
SP300	SIDE HUNG	36.0	62.4	208.0	32.5	42.7	307.0
SP400	SIDE HUNG	36.0	140.3	273.3	32.5	42.7	424.9



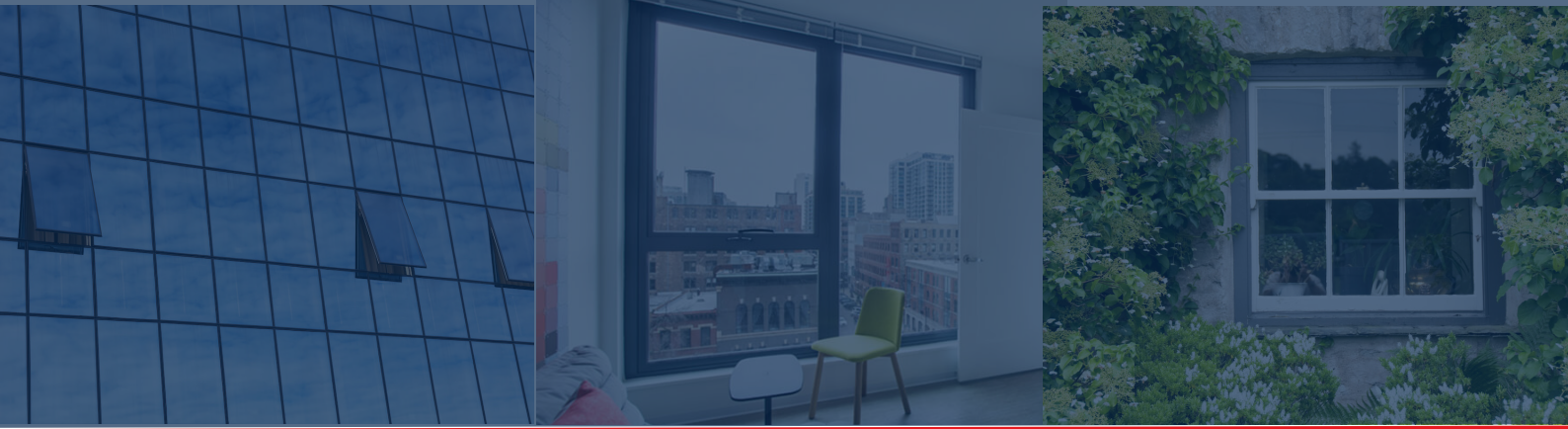
Optimum Performance Tested to last

- Fire safety compliant for means of escape in line with Approved Document B1.
- BBA tested in accordance with BS6375-2:1987, BS6375-2:2009 and BSEN13126-6:2008.
- Cycle tested with normal operation after 25,000 cycles in accordance with BSEN 1191:2012 (Exceeded class 3).
- Available in Ferritic steel and Austenitic steel for high corrosion resistance. Tested to Grade 5 – 480 hours exposure in accordance with BS EN 1670:2007.



Note: For larger or heavier sashes, all sash fixings should pick up reinforcement to ensure consistent performance.

It is the responsibility of the window manufacturer to ensure that the finished window meets the required safety and performance specifications.



www.cotswoldap.com

At Cotswold Architectural Products, every component is engineered for precision, durability, and strength. Trusted by professionals worldwide, we deliver performance you can rely on.

Every effort has been made to ensure the information in this datasheet is accurate at the time of publication. Cotswold Architectural Products Ltd reserves the right to make changes without prior notice.

Copyright 2025,
Cotswold Architectural Products Ltd



Cotswold Architectural Products Ltd

Manor Road
Cheltenham
Gloucestershire
GL51 9SQ

Tel: +44 1242 233993
Email: info@cotswoldap.com

