

DATASHEET



Cotswold
Architectural Products



Sinidex Friction Stays

Plus Extreme

Sinidex Friction Stays

Cotswold's Sinidex stays offer improved security and weather sealing through the use of a nylon reduced friction end cap. These stays have been designed to offer smooth closure and higher performance for window applications of all sizes.

- Superior load capacity performance up to 50kgs for top hung windows as standard.
- Available in 8", 10", 12", 16", 20" and 24" for top hung applications and 8", 12" and 16" for side hung applications.
- Available in 13mm and 17mm stack heights.

Extreme Heavy Duty

- Increased load capacity up to 30kgs (12") & 35kgs (16").
- Heavy-duty reinforced link arms to support larger and heavier windows.
- Steel reinforced slide for added strength.
- Opening angle of 87° with the HS90 12" Extreme and 60° with the HS60 16" Extreme.

Recommended Maximum Window Weights and Rebate Sizes

Product	Application	Size (Ins)	Size (mm)	Max Vent Width (mm)	Max. Vent Height (mm)	Max. Vent Weight (kg)	Stack Height (mm)	Max. Opening Angle
HS100 8"	Top Hung	8	210	1200	350	12	13/14 & 16/17	62°
HS90 10"	Top Hung	10	260	1200	450	16	13/14 & 16/17	90°
HS75 10"	Top Hung	10	260	1200	450	16	13/14 & 16/17	65°
HS90 12"	Top Hung	12	304	1200	600	21	13/14 & 16/17	86°
HS65 12"	Top Hung	12	304	1200	600	21	13/14 & 16/17	65°
HS90 16"	Top Hung	16	406	1200	750	26	13/14 & 16/17	83°
HS100 20"	Top Hung	20	511	1200	1000	30	13/14 & 16/17	42°
HS100 24"	Top Hung	24	616	1200	1500	50	13/14 & 16/17	38°

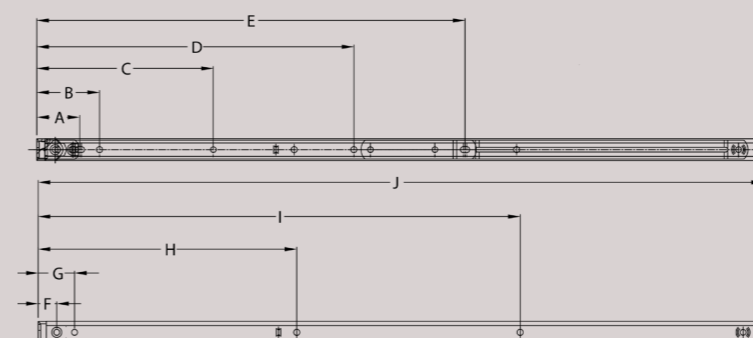
Product	Application	Size (Ins)	Size (mm)	Max Vent Width (mm)	Max. Vent Height (mm)	Max. Vent Weight (kg)	Stack Height (mm)	Max. Opening Angle
HS100 8"	Side Hung	8	210	400	1200	18	13/14 & 16/17	62°
HS90 12"	Side Hung	12	304	600	1200	24	13/14 & 16/17	86°
HS65 12"	Side Hung	12	304	600	1200	24	13/14 & 16/17	65°
HS90 16"	Side Hung	16	406	700	1300	26	13/14 & 16/17	83°
HS 201	Side Hung	12	311	650	1250	20	13/14 & 16/17	60°
HS 216	Side Hung	16	406	700	1300	28	13/14 & 16/17	48°

Product	Application	Size (Ins)	Size (mm)	Max Vent Width (mm)	Max. Vent Height (mm)	Max. Vent Weight (kg)	Stack Height (mm)	Max. Opening Angle
HS90 12 EXTREME	Side Hung	12	311	750	-	30	13/14 & 16/17	87°
HS60 16 EXTREME	Side Hung	16	406	950	-	35	13/14 & 16/17	60°

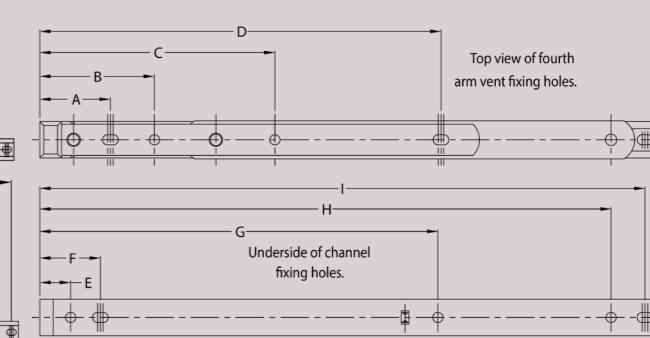
Fixing Hole Details

Product	Application	A	B	C	D	E	F	G	H	I	J
HS100 8"	TOP/SIDE HUNG	36.0	52.8	-	-	150.6	15.6	30.6	166.6	-	203.5
HS90 10"	TOP HUNG	35.72	52.5	69.9	-	202.7	15.6	30.6	209.3	-	253.8
HS75 10"	TOP/SIDE HUNG	35.72	52.5	69.9	-	202.7	15.6	30.6	209.3	-	253.8
HS90 12"	TOP/SIDE HUNG	35.72	57.9	-	-	202.7	15.6	30.6	199.7	-	305.2
HS65 12"	TOP/SIDE HUNG	31.95	98.2	-	-	212.4	15.6	30.6	225.9	-	305.2
HS90 16"	TOP/SIDE HUNG	35.95	137.4	-	-	271.6	15.6	30.6	307.9	-	406.2
HS100 20"	TOP/SIDE HUNG	35.72	52.6	216.8	-	310.8	15.6	30.6	217.3	-	508.3
HS100 24"	TOP/SIDE HUNG	35.72	52.5	98.0	267.5	361.5	15.6	30.6	217.1	404.9	607.4
HS201	SIDE HUNG	32.6	-	114.2	212.7	279.3	15.5	30.5	225.4	303.6	-
HS216	SIDE HUNG	36.2	53.0	165.5	314.3	380.9	15.5	30.5	226.2	407.0	-
HS90 12 EXTREME	SIDE HUNG	36.0	58.2	-	202.7	15.5	30.5	199.7	-	305.2	-
HS60 16 EXTREME	SIDE HUNG	36.0	-	138.0	271.5	15.5	30.5	230.5	369.0	406.0	-

Sinidex Top and Side Hung



Sinidex Extreme



NOTE:- FIXING HOLES ARE LETTERED CONSECUTIVELY FROM END CAP END

Optimum Performance Tested to last

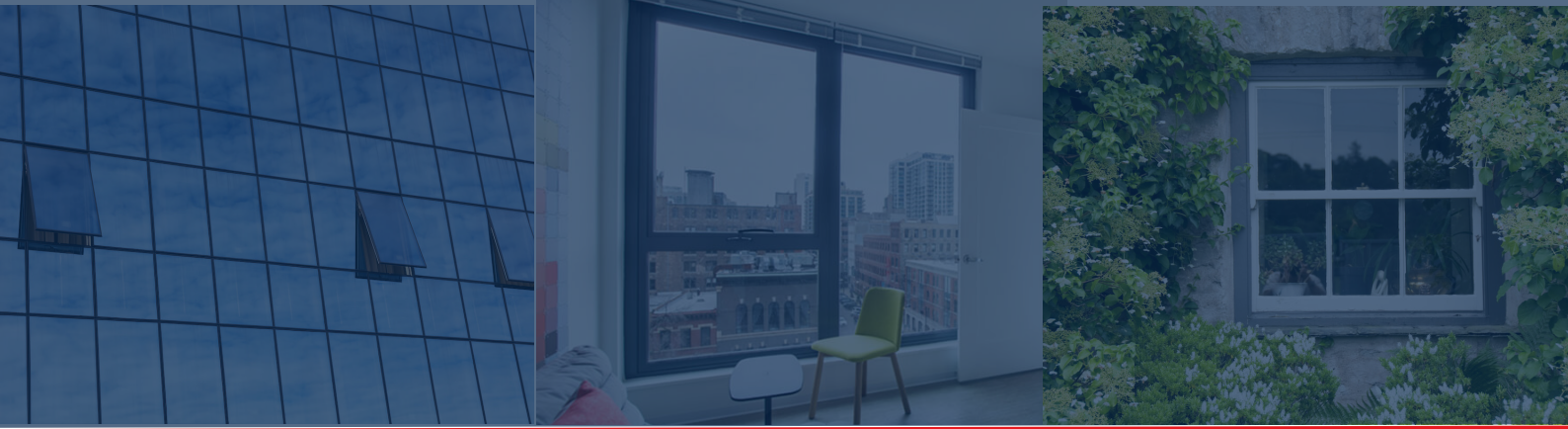
- BBA tested in accordance with BS6375-2:1987, BS6375-2:2009 and BSEN13126-6:2008.
- Cycle tested with normal operation after 25,000 cycles in accordance with BS EN 1191:2012 (Exceeded class 3).
- Available in Ferritic steel and Austenitic steel for high corrosion resistance. Tested to Grade 5 – 480 hours exposure in accordance with BS EN 1670:2007.

Note: For larger or heavier sashes, all sash fixings should pick up reinforcement to ensure consistent performance.



When fitting the Cotswold Easy Clean Friction Stays, please observe BS8213 Part1:2004 Code of practice for safety in use and during cleaning of windows.

It is the responsibility of the window manufacturer to ensure that the finished window meets the required safety and performance specifications.



www.cotswoldap.com

At Cotswold Architectural Products, every component is engineered for precision, durability, and strength. Trusted by professionals worldwide, we deliver performance you can rely on.

Every effort has been made to ensure the information in this datasheet is accurate at the time of publication. Cotswold Architectural Products Ltd reserves the right to make changes without prior notice.

Copyright 2025,
Cotswold Architectural Products Ltd



GLASS AND GLAZING FEDERATION



Cotswold Architectural Products Ltd

Manor Road
Cheltenham
Gloucestershire
GL51 9SQ

Tel: +44 1242 233993
Email: info@cotswoldap.com

